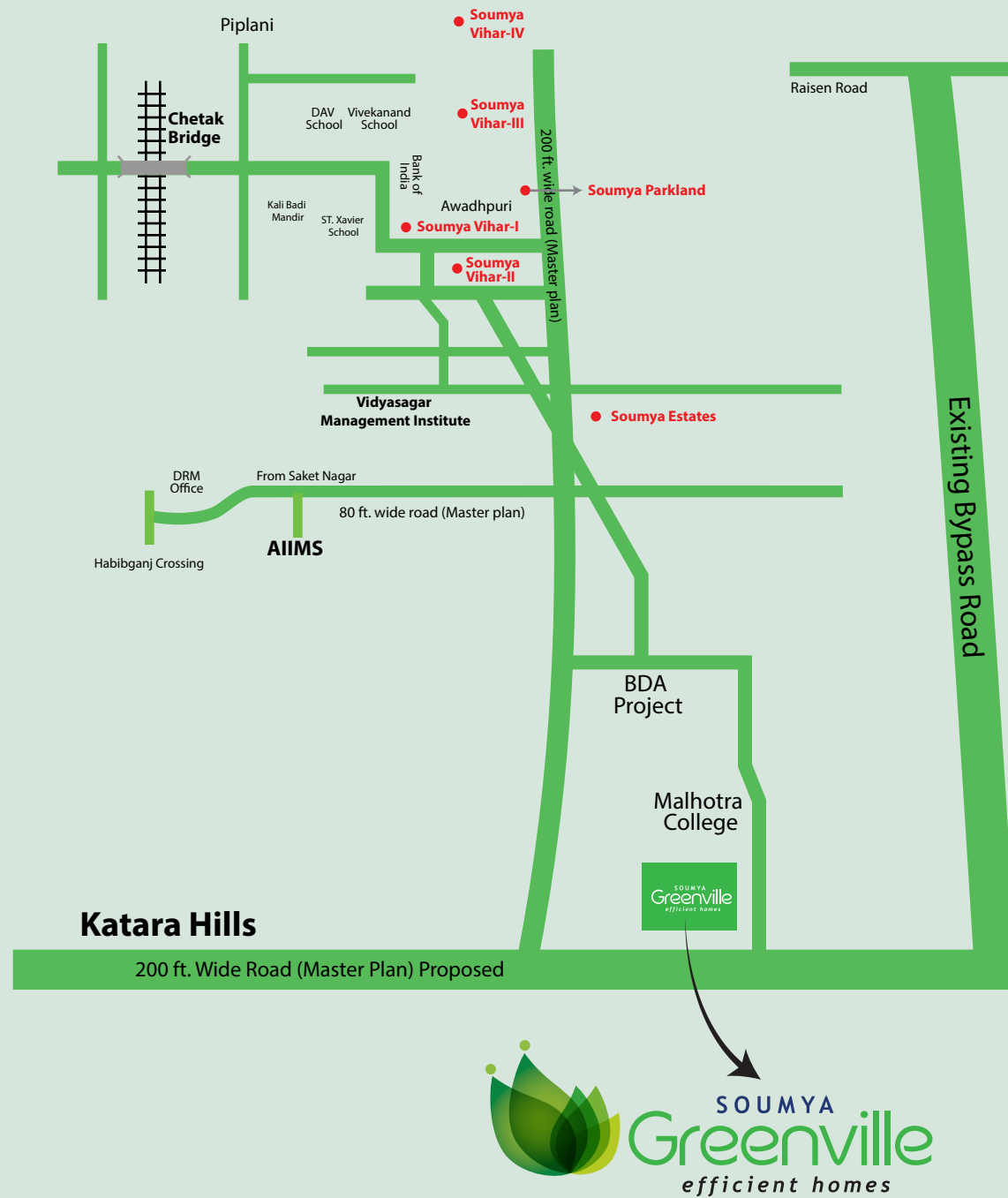


● Location Map



The Perfect Blend of Location,
Greenery & Lifestyle



Green, Eco-friendly and Low-maintenance Duplex Bungalows

Soumya Greenville, one-of-a-kind Township, where life is inspired by nature. Open the window and feel the fresh breeze of morning through your hair or fall in love with the liveliness, peace, tranquility of the ambience Soumya Greenville is project of Duplex Bungalows equipped with all modern amenities.

Soumya Greenville, is not only blessed with spectacular natural bounty and pollution-free environment but also well connected with public transport facilities and has very close connectivity with banks, hospitals, schools and colleges. A place where you know you have everything revolving around your own lifestyle, Soumya Greenville is your dream home destination at the most convenient location.

Group Profile

We at Soumya Homes Pvt. Ltd. Have been contributing in shaping the skyline of Bhopal by building elegantly designed residential and commercial properties inclusive of apartments, shopping malls and corporate structures since inception. Soumya Homes Pvt. Ltd. is a group housing company with distinct flair for luxury promoted by a dynamic professional team having rich experience and expertise in real estate sector. The presence of numerous aesthetic landmarks in the city of lakes, Bhopal serves as a testimony to our quality construction and dedicated efforts of over 20 years in real estate business. We have an extended group of technically qualified specialists working as a cohesive team, to bring in reality ideal structures with quality infrastructure desired, to meet customer aspiration.

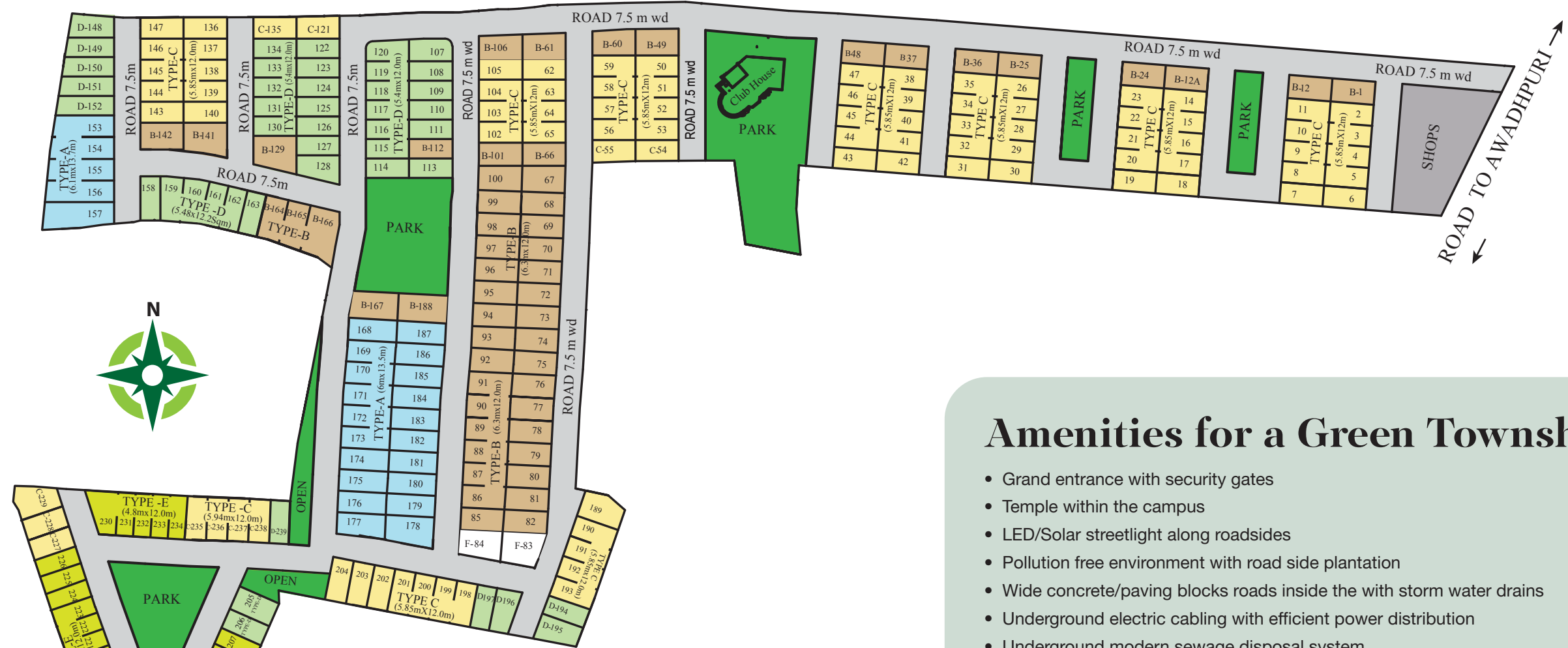
Completed Projects

- Soumya Apartments – I, II, III & IV • Soumya Enclave • Soumya Enclave Ext.
- City Centre • Soumya Vihar – I, II, III & IV • Soumya Estates • Soumya Privilege
- Soumya Parklands

Current Projects

Soumya Evergreen, Soumya Nakshatra, Soumya Marvella, Soumya Parklands Extn., Tulip Greens, Tulip Heights, Fortune Soumya Heritage, Fortune Soumya Atlantis, Fortune Soumya Vedanta, Fortune Soumya Santosa & Fortune Soumya Niket.





- TYPE-A : Duplexl Plot Size: 20'0"x45'0" (900 sqft)
- TYPE-B : Duplexl Plot Size: 21'0"x40'0" (840 sqft)
- TYPE-C : Duplexl Plot Size: 19'6"x40'0" (784 sqft)
- TYPE-D : Duplexl Plot Size: 18'0"x40'0" (720 sqft)
- TYPE-E : Duplexl Plot Size: 16'0"x40'0" (640 sqft)
- OPEN AREA

Amenities for a Green Township

- Grand entrance with security gates
- Temple within the campus
- LED/Solar streetlight along roadsides
- Pollution free environment with road side plantation
- Wide concrete/paving blocks roads inside the with storm water drains
- Underground electric cabling with efficient power distribution
- Underground modern sewage disposal system
- Sewage treatment plant
- Solid waste management system
- In-campus shopping arcade
- Ample water supply
- Club house with AC gym & Indoor games
- Water conservation system



TYPE-A

Duplex | Plot Size: 20'0"x45'0" (900 sqft)



Ground Floor Plan



First Floor Plan

TYPE-B

Duplex | Plot Size: 21'0"x40'0" (840 sqft)



Ground Floor Plan



First Floor Plan

TYPE-C

Duplex | Plot Size: 19'6"x40'0" (784 sqft)



Ground Floor Plan



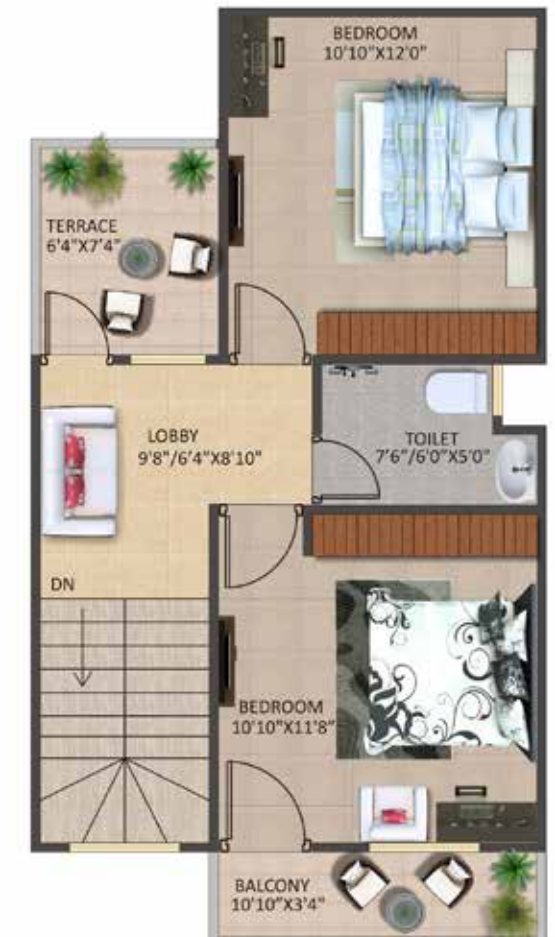
First Floor Plan

TYPE-D

Duplex | Plot Size: 18'0"x40'0" (720 sqft)



Ground Floor Plan



First Floor Plan



TYPE-E

Duplex | Plot Size: 16'0"x40'0" (640 sqft)



Ground Floor Plan



First Floor Plan

Specifications

Structure: Earthquake resistant R.C.C. framed structure.

Walls: A class brick masonry.

Flooring: 2'x2' vitrified tiles in drawing / dining, bed room and living area. Anti-skid tiles in porch, back yard and terrace.

Toilet: Premium designer tiles up to 7' height in pastel color sanitary fittings one European and one Indian toilet seat as applicable.

Plumbing: Concealed PPR/CPVC pipe lines. Good quality CP fittings.

Kitchen: Granite platform with steel sink, glazed tiles up to 2' height above platforms.

Doors: Flush door with dewas section door frames & aluminium / steel hardware fittings.

Windows: 3 track powder coated aluminium sliding windows with plain glass with MS security grill.

Electrification: Concealed copper wiring with security through MCB's. ISI mark modular switches.

Water Supply: Adequate water supply through sump well with individual overhead water tank.

Painting: All internal walls including roof shall be painted with pleasing colour of oil bound distemper. Weather proof paint on external walls.